



April 7, 2011





---

Inheritance of KIPP model

Dissolution of partnership with PS7

Identity through facility

Impact of moves - 4 times in 8 years

Enrollment - response to move and the fidelity to the model

---

## ENROLLMENT

"Chicken or the Egg"

## BUDGET

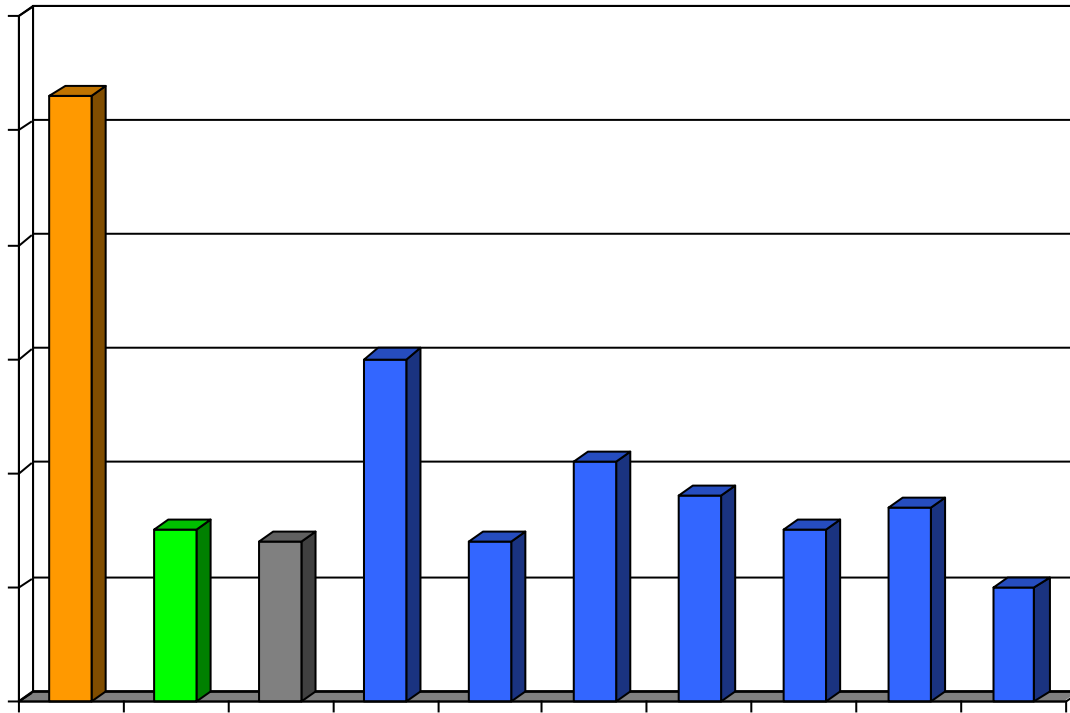
8 year success

Retired nearly \$500,000 in debt  
over last 4 years.

2 years of positive net income in  
last 2 audits

---

Schoolwide - 158  
Point API gain over  
the last years



---

SCUSD

Councilmember Bonnie Pannell

Sac State - Health Professions Pipeline Project -  
Sac State, Health Professions H.S. and S.A.C.  
Prep

New Hope Community Development Corp.  
and Genesis Church

Christian Brothers, Jesuit, and Cristo Rey  
High Schools

Girl Scouts of the Heart of Central CA

Sam Pannell-Meadowview Community  
Center



---

AT&T

Councilmember Bonnie Pannell

GenCorp Foundation

Howard Charitable Foundation

Morgan Stanley Smith Barney

U.S. Bank

Wells Fargo Bank

25-30 private donors, staff, Board  
Members, and parents

---

Oversight Fee

Special Education Encroachment  
Fee

Proposition 39 for Facilities

Nutrition Services for School  
Meals

ASES Oversight Fee

Support and Training - BTSA

---

1/5 or so of revenue turnover within SCUSD through fees and services

"High-risk" category of students being served - *students of color & socioeconomically disadvantaged* families at a demonstrated high level

Students matriculating to SCUSD high schools better prepared

Students going on to college (1<sup>st</sup> class starting in the fall of 2011)

